



2022 Outcomes Report

[CAMDEN.RUTGERS.EDU](https://camden.rutgers.edu)





Always Achieving

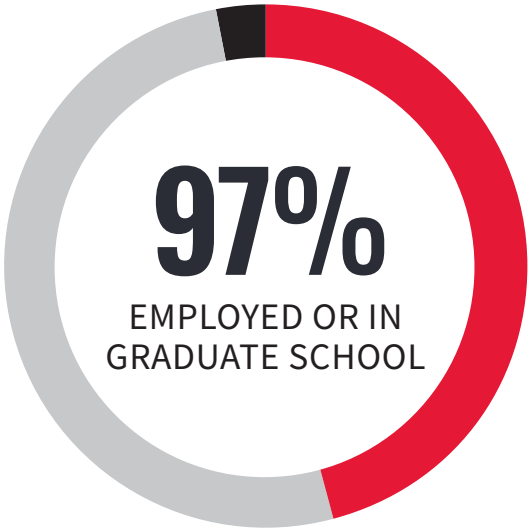
The Rutgers University–Camden Class of 2022 graduates are poised to make a positive, meaningful impact on the world; in fact, they already have. Rutgers–Camden graduates have benefited from the innovative curriculum and rigorous experiential learning opportunities that they received on and off campus, and they leave with a depth of knowledge that’s informed not just by lectures and textbooks but by real-world situations with real-world results. They graduate ready to turn their robust, hands-on experiences into both employment and further academic scholarship. Whether in corporate, not-for-profit, or government industries, the head start they got here at Rutgers–Camden will last throughout their careers.

SUPPORT FROM START TO FINISH

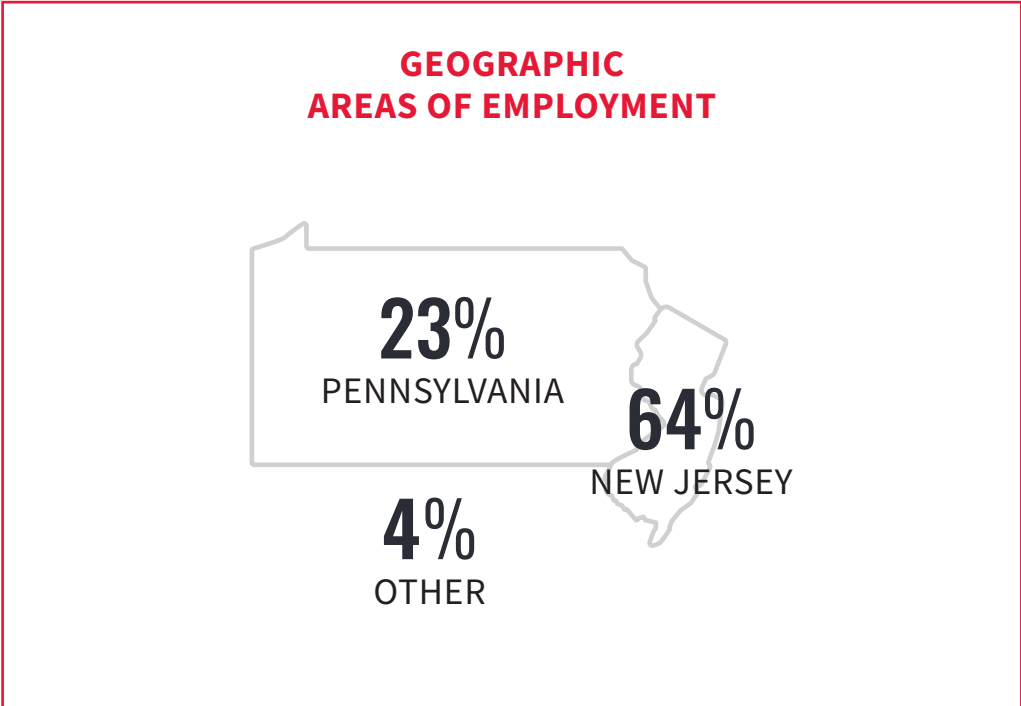
The Career Center is dedicated to educating and empowering undergraduates, graduates, and alumni in the career planning process by:

- Facilitating self-assessment and career exploration to develop a clear career objective
- Promoting avenues for experiential learning
- Providing assistance in job search and transition to professional life
- Cultivating and maintaining partnerships with employers
- Advising students preparing for postgraduate study
- Serving as a resource to staff, faculty and community

College of Arts and Sciences



- ▶ 46% EMPLOYED FULL-TIME OR PART-TIME OR IN FULL-TIME SERVICE PROGRAMS
- ▶ 51% GRADUATE SCHOOL
- ▶ 3% SEEKING OPPORTUNITIES



Source: Outcomes information was obtained from 379 (55.5%) of the 682 graduates from the class of 2022.

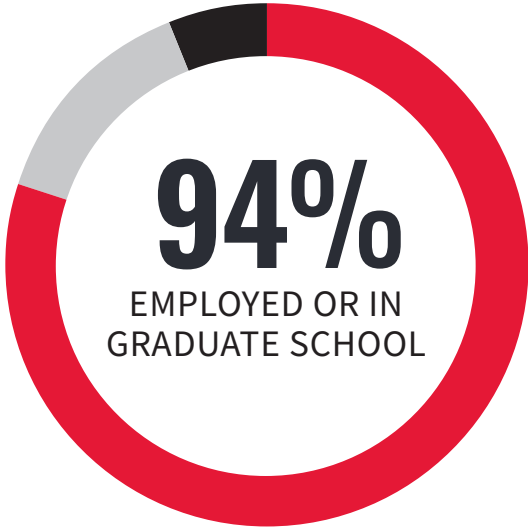
TOP EMPLOYERS

Acelero Learning
Allergy Management Solutions
American Income Life Insurance Company
American Water
Ancora Psychiatric Hospital
Apple
Aramark
Asian Pacific Islander Political Alliance
ASRC Federal Holding Company, LLC
AstraZeneca
Atlantic City Electric
Atlantic County Government
Bancroft
Behavior Interventions, Inc.
Boston Public Health Commission
Brett DiNovi and Associates, LLC
Bridgeway Benefit Technologies, LLC
Burlington Township School District
Camden Community Partnership, Inc.
Camden County Prosecutor's Office
Camden's Promise Charter School
Capital Health
Children's Hospital of Philadelphia
City of East Palo Alto
Conner Strong & Buckelew
Cooper University Health System
Crum & Forster
Edmund Optics
Elwyn
EMSL Analytical Inc.
Ernst & Young
Essex County
Fannie Mae
Fast Track Physical Therapy
FedEx Ground
First American Payment Systems
First Children Services
GEICO
Genesis HealthCare
Global Exchange Payment Solutions
Gloucester City School District
Google, Inc.
Greater New Jersey Creative Counseling
Hackensack Meridian Health Carrier Clinic
Hispanic Family Center of Southern NJ, Inc.
Holy Name Medical Center
Indeed
Insight Global
JEVS Human Services
Kingsway Regional School District
KPMG US
KYW Newsradio
LabCorp
Lockheed Martin
LUCY Outreach
Mastercard
Melitta North America
Mi Casita Spanish Immersion Preschool
Microsoft Corporation
Monre Township Public Schools
Mount Sinai Health System
NeurAbilities Healthcare
New Jersey Courts
New Jersey Office of the Public Defender
City of New York
New York Life
Nielsen
OPEX Corporations
Pennsylvania Convention Center
Penske Automotive Group
Peticote Veterinary Clinic, LLC
PNC Financial Services
Quaker Houghton
RTD Financial Advisors, Inc.
ScribeAmerica
Senator Cory A. Booker
Sherwin-Williams
SHI International Corp
Shoreside Veterinary Care
Slack, Inc.
Sovereign Consulting
Star News Group
Starr Restaurants
State of New Jersey
TD Bank
Thayer Distribution
The Michaels Organization
The School District of Philadelphia
Thomas Jefferson University Hospitals
U.S. Postal Service - Office of the Inspector General
Union County College
United States Congress
United States Probation Office
University of Pennsylvania Health System
University of Pennsylvania, Perelman School of Medicine
Virtua Health
Walt Disney World
Weichert Realtors
Whole Heart Maternal Mental Health
WuXi AppTec, Inc.

TOP GRADUATE SCHOOLS

Arizona State University
Cuny John Jay College of Criminal Justice
Drexel University
Eastern University
Felician University
George Washington University
Georgetown University
John Jay College of Criminal Justice
Johns Hopkins University
LaSalle University
Massachusetts College of Pharmacy & Health Sciences
North Carolina Central University
Northeast College of Health Sciences
Palm Beach Atlantic University
Rowan University
Rutgers University - Camden
Rutgers University - New Brunswick
Rutgers University - Newark
Rutgers University School of Law - Camden
Rutgers University School of Social Work
Saint Joseph's University
Salus University
Seton Hall University
Southeastern Oklahoma State University
St. George's University
St. Joseph's University
Stevens Institute of Technology
Stockton University
Suffolk University - Law
SUNY Upstate Medical University
Temple University
Temple University - Dental
Temple University School of Pharmacy
Thomas Edison State University
Thomas Jefferson University
Touro University Worldwide
University of Baltimore School of Law
University of Delaware
University of Michigan
University of Minnesota
University of Missouri St. Louis
University of Pennsylvania
University of Southern California
Vermont Law and Graduate School
Villanova University
Widener University
Widener University Delaware Law school

School of Business–Camden



- ▶ 80% EMPLOYED FULL-TIME OR PART-TIME OR IN FULL-TIME SERVICE PROGRAMS
- ▶ 14% GRADUATE SCHOOL
- ▶ 6% SEEKING OPPORTUNITIES

\$60,880
AVERAGE SALARY

\$61,250
MEDIAN SALARY

SALARY AVERAGES BY DEGREE

\$58,804
ACCOUNTING

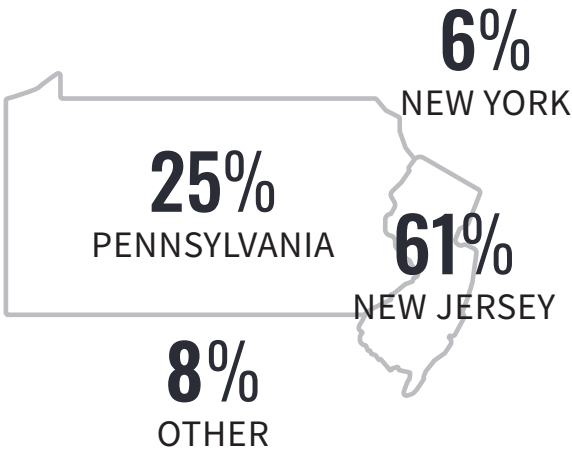
\$67,629
BUSINESS ADMINISTRATION

\$61,024
FINANCE

\$65,000
MANAGEMENT

\$47,500
MARKETING

GEOGRAPHIC AREAS OF EMPLOYMENT



INDUSTRY AREAS OF EMPLOYMENT

- ▶ Accounting 13%
- ▶ Financial Services 9%
- ▶ Retail Stores 7%
- ▶ Transportation & Logistics 6%
- ▶ Automotive 5%
- ▶ Healthcare 5%
- ▶ Commercial Banking & Credit 4%
- ▶ CPG - Consumer Packaged Goods 4%
- ▶ All Other Industries 47%

Source: Outcomes information was obtained from 225 (63.3%) of the 355 class of 2022 graduates from the undergraduate School of Business.

TOP EMPLOYERS

ACCOUNTING

Berkshire Hathaway
HomeServices Fox & Roach,
REALTORS
Bowman & Company, LLP
Campbell Soup Company
Deloitte

EisnerAmper LLP
Ernst & Young
Heffler, Radetich & Saitta LLP
Hillebrand Gori
Holman Automotive Group, Inc.

KPMG
Navistar, Inc.
New Jersey Office of Legislative
Services
RSM US LLP

The Specialists Group, LLC
Tokio Marine North America
Services
Union Surgery Center, LLC
Withum

BUSINESS ADMINISTRATION

Amazon
Apple
AT&T
Bank of America
Campbell Soup Co.
Canon Business Process Services, Inc
Chase
Cornell Cooperative Extension of
Jefferson County

Edmund Optics
Enterprise Holdings
Fastenal Company
FedEx Ground
FOX Rehabilitation
Johnson Matthey
Mercer County Board of Social
Services
National Vision Inc.

New Jersey Department of
Banking and Insurance
Resorts Casino Hotel
SEI
SHI International Corp.
State Farm
Techtronic Industries - TTI
TransUnion
Tucker Company Worldwide

US ARMY
Wawa, Inc.
Weichert Realtors
WHO SEEK Inc.
Willingboro Dept of Public Works

FINANCE

Aerotek
Allstate
Amtrak
Aramark - Lincoln Financial Field
Baker Tilly US, LLP
Baratz & Associates
Burlington Stories, Inc.

Campbell Soup Company
Chatham Financial
Conner Strong & Buckelew
Deloitte
Fox, Penberthy & Dehn at Morgan
Stanley
HFM Investment Advisors LLC

HNTB Corporation
Holman Automotive Group, Inc.
J&J Snack Foods Corporation
Jackson Hewitt Tax Service Inc.
JPMorgan Chase & Co
KPMG
Resorts Casino Hotel

SEI Investments Company
Target Corporation
TD Bank
The Vanguard Group
Thomas Jefferson University
Hospitals
Xfinity Live!

MARKETING

Burlington Stories, Inc.
Caesars Entertainment, Inc
Carhartt, Inc.
Citizens Financial Group

Corepoint Networks
Freedom Mortgage
Investment Performance
Services, LLC
National Chemical Laboratories

NFI Industries
Premier Legal Marketing
Prime Storage Group
RLS Logistics

Rush Street Interactive
SEI Investments Company
Subaru of America, Inc.
TD Bank

MANAGEMENT

American Water
Baker Tilly US, LLP
Brown's Super Stores, Inc.
Burlington Stories, Inc.
CDW

Conner Strong & Buckelew
Enterprise Rent-A-Car
Fidelity Investments
GEICO
Holt Logistics Corp

Johnson & Johnson
Lowe's Companies Inc.
MJX Asset Management LLC
NFI Industries
PHH Mortgage Corporation

Philadelphia Phillies
TD Bank
Women Against Abuse, Inc
Woods Services

BUSINESS ADMINISTRATION

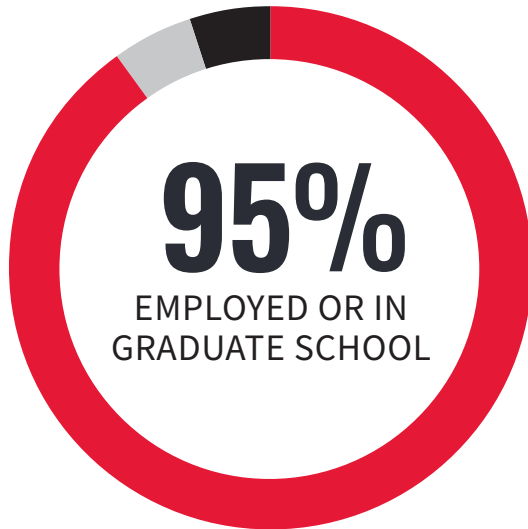
Advisors Mortgage Group, LLC
Advocare Delgiorno
Endocrinology
American Family Insurance
Bank of America
Bartlett Bearing Company, Inc.
Burlington Stories, Inc.
Cigna Healthcare
Citigroup
Colliers Engineering & Design,
Inc.
Cooper University Health Care
CURION

Deloitte
DIRECTV
Edmund Optics
Federal Emergency Management
Agency
Fintech
First Commerce Bank
Fresenius Medical Care Holdings,
Inc.
Hikma Pharmaceuticals
Holiday Inn Express
Kohl's
Lockheed Martin

Mercedes-Benz USA
Mitsubishi of Cherry Hill
New York City Criminal Justice
Agency
Ogilvy
OPEX Corporation
Orca Security
PATHS, LLC
Pepco Manufacturing Co
Philadelphia 76ers
Republic Bank & Trust Company
S&P Global

Southwest Airlines
Stryker Corporation
Subaru of America, Inc.
TelevisaUnivision
The Opus Group LLC
Tommy Hilfiger
United States Department of the
Navy
Verizon
Wakefern Food Corporation

School of Nursing–Camden



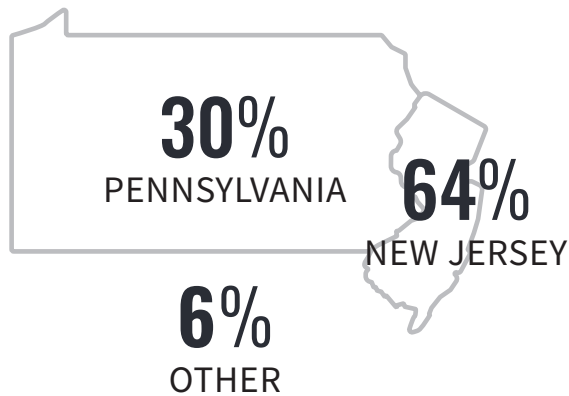
- ▶ 90% EMPLOYED FULL-TIME OR PART-TIME OR IN FULL-TIME SERVICE PROGRAMS
- ▶ 5% GRADUATE SCHOOL
- ▶ 5% SEEKING OPPORTUNITIES

\$36,607–\$88,670
SALARY RANGE

\$72,061
AVERAGE SALARY

\$75,700
MEDIAN SALARY

GEOGRAPHIC AREAS OF EMPLOYMENT



AREAS OF PRACTICE

Cardiology Registered Nurse
Clinical Exercise Physiologist
Clinical Information Manager
Emergency Room Nurse
Intensive Care Nurse
ITCU Nurse Resident
Mental Health Therapist
Mother/Baby Nurse
Neuroscience ICU Nurse
Nurse - Trauma Stepdown
Nurse Extern
Nurse Resident
Pediatric Registered Nurse
Registered Nurse
Vaccine Specialist

TOP EMPLOYERS

AtlantiCare

Bancroft

Camden County

Capital Health

CFG Health Network

Children's Hospital of Philadelphia

Cooper University Health Care

Envision Physician Services

Hackensack Meridian Health

Hampton Behavioral Health Center

Hunterdon Center For Surgery

Inova Health System

Inspira Health

JFK Medical Center

Johns Hopkins Medicine

Maryville Addiction Treatment Centers

Methodist Health System

Penn Presbyterian Medical Center

Preferred Home Health Care & Nursing Services

Robert Wood Johnson University Hospital

Saint Peter's Healthcare System

Temple University Hospital

Thomas Jefferson University hospitals

University of Pennsylvania Health System

Virtua Health





Career Center Services

- Career counseling/
Job search coaching
- Online assessment testing
(interest/personality)
- Graduate/professional
school advising
- Student alumni
career connect
- School-to-professional
seminars
- On-campus recruiting
- Online job and
internship leads
- Events: Job & internship fairs,
graduate/professional school
fairs
- Access to New Jersey,
Delaware Valley, and
nationwide career events

CAREER CENTER

326 Penn Street
Campus Center, Room 006, Lower Level
Camden, NJ 08102

856-225-6046
careercenter@camden.rutgers.edu
cc.camden.rutgers.edu

